

Intelligent Battery Gauge

MONITORS, VOLTAGE, CURRENT AND OTHER BATTERY PARAMETERS



The Antares battery gauge selectively displays battery voltage, charge and discharge current, consumed amp hours and remaining battery capacity. Using a large clear backlit LC display and an intuitive user interface, all parameters can be recalled with just the press of a key

There are two versions dependant upon your requirements, a basic version with "direct parameter access" which will be appreciated by the less technical operators.

The advanced version includes a raft of additional features and programmability making this monitor suitable for integration into more advanced auxiliary electrical power systems.

Antares applications engineers are on hand to help with this selection and to help with the integration into your vehicle.

KEY FEATURES

Basic version

- 12V and 24V autosensing
- Provides critical information on battery
- Suitable for any battery type
- Displays V, A, Consumed Ah and remaining capacity
- IP44 splash proof front panel
- Backlit LCD Display
- Two battery inputs
- Quick nut mounting system
- Shunt selection feature
- Simple user interface
- CE and e mark certified
- Volt free alarm contacts
- 24 months warranty
- High precision 500A shunt

Advanced Version

-as above plus
- Time remaining display
- Historical event data logging
- Programmable volts free alarm contacts
- Selectable advanced mode interface
- Communication expansion port for Antares port expander module



FM 37786
ISO 9001:2008

Antares (Europe) Limited
Knaves Beech Business Centre
Davies Way
Loudwater
HIGH WYCOMBE
HP10 9QR UK

www.antares.co.uk
email: info@antares.co.uk
tel: +44 (0)1628 535440
fax: +44 (0)1628 535441

ANTARES
engineering with answers

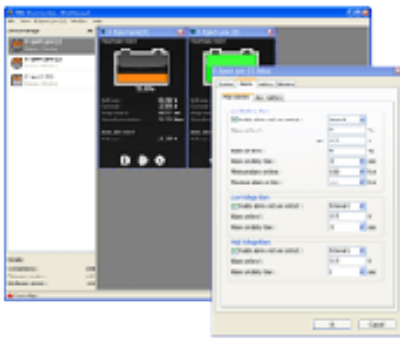


Intelligent Battery Gauge

MONITORS, VOLTAGE, CURRENT AND OTHER BATTERY PARAMETERS



The 5:1 pre-scaler allows the battery gauge to be used with high voltage battery banks such as 36V, 48V, 72V or 120V



The advanced battery gauge software gives a clear graphical interface on a connected laptop



A temperature sensor on the battery further improves accuracy by compensating for temperature effects



RS232 interface kit for laptop or computer. USB kit available. Provided as part of projects.

SPECIFICATIONS		
Version	IBG Basic	IBG Advanced
Part Number	96451	96452
Supply voltage	9-35VDC +/- 0.01V	
Main Battery sense	0-35VDC	
Supply Current (backlight/relay off)	7mA	9mA
Aux Battery Sense	2-35VDC	
Operating temperature	-20deg C to +20deg C	
Input Current	-600A to +600A (standard shunt)	
Current Accuracy	+/- 0.3%	
Voltage Accuracy	+/- 0.4%	
Time to go resolution	Not applicable	0-100 +/- 1minute
Time to go resolution	Not applicable	0-100 hrs +/- hour
Amp-hour resolution	0-200Ah +/- 0.1A	
Amp-hour resolution	200-10,000Ah +/- 1A	
Temperature resolution	-20-+50degC +/-0.5 deg C	
Dimension Front Panel	64mm diameter	
Dimension Body	52 mm diameter x 79mm depth	
Gauge Weight	95g	
Shunt dimension	45 x 87mm x 35mm incl screws	
Shunt Weight	145g	
OPTIONS		
Temperature sensor	Not applicable	96455
Quick connection kit	96453	Not applicable
Prof Connection Kit	Not applicable	96454
Isolated USB interface	Not applicable	OEM project
Isolated RS-232 interface	Not applicable	OEM project
1:5 Voltage Pre-scaler	Not applicable	OEM project
Windows 98/ME/2000/XP	Not applicable	OEM project
IP Protection	IP20 (front panel IP65)	
Compliance	EN50081-1 (EN55022), EN50082-1 (IEC 801-2/3/4, EN61000-4-3), LVD 73/23/EEC (EN60335-1, e4-95/54/EC)	